

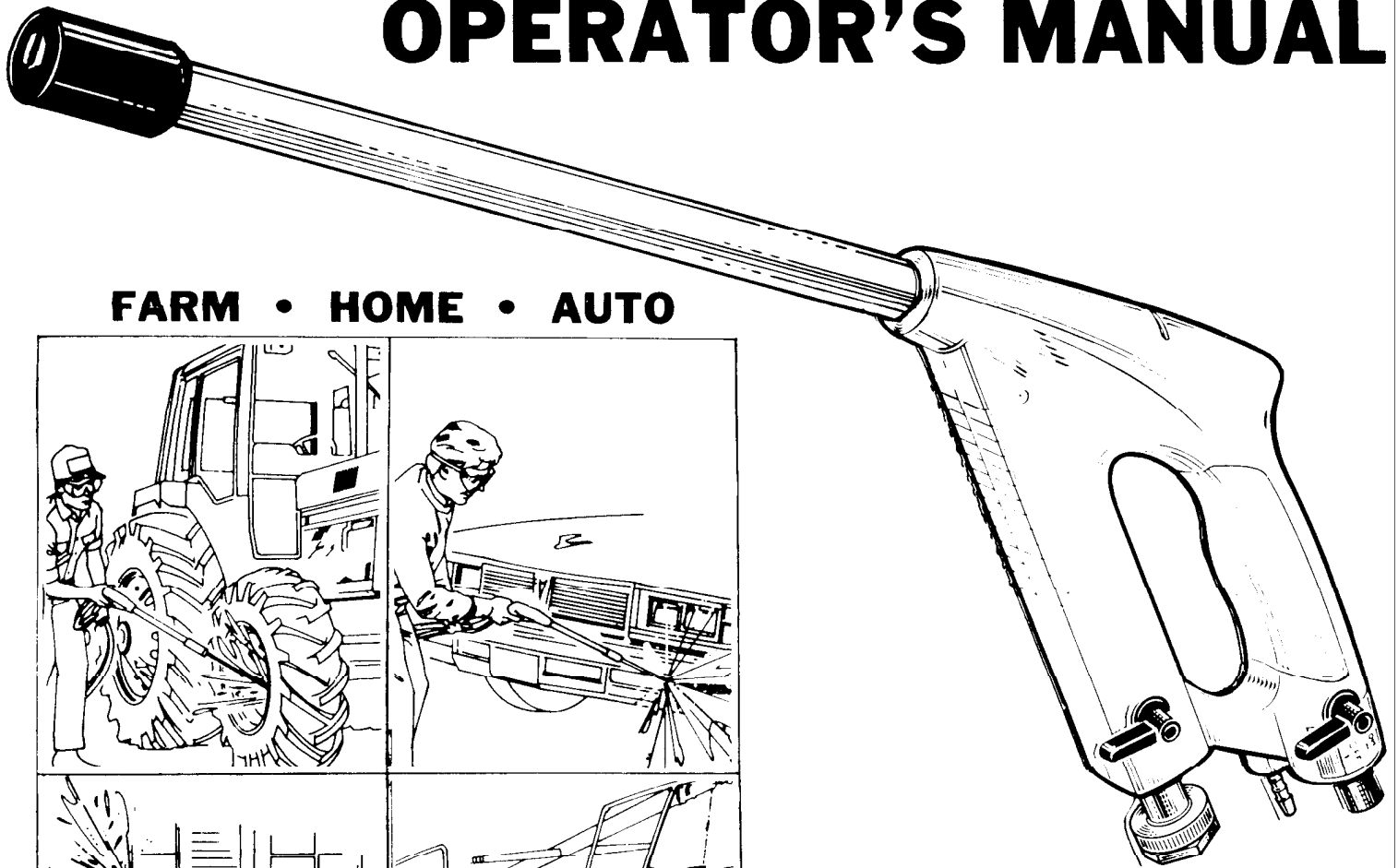


# THUNDER GUN<sup>®</sup>

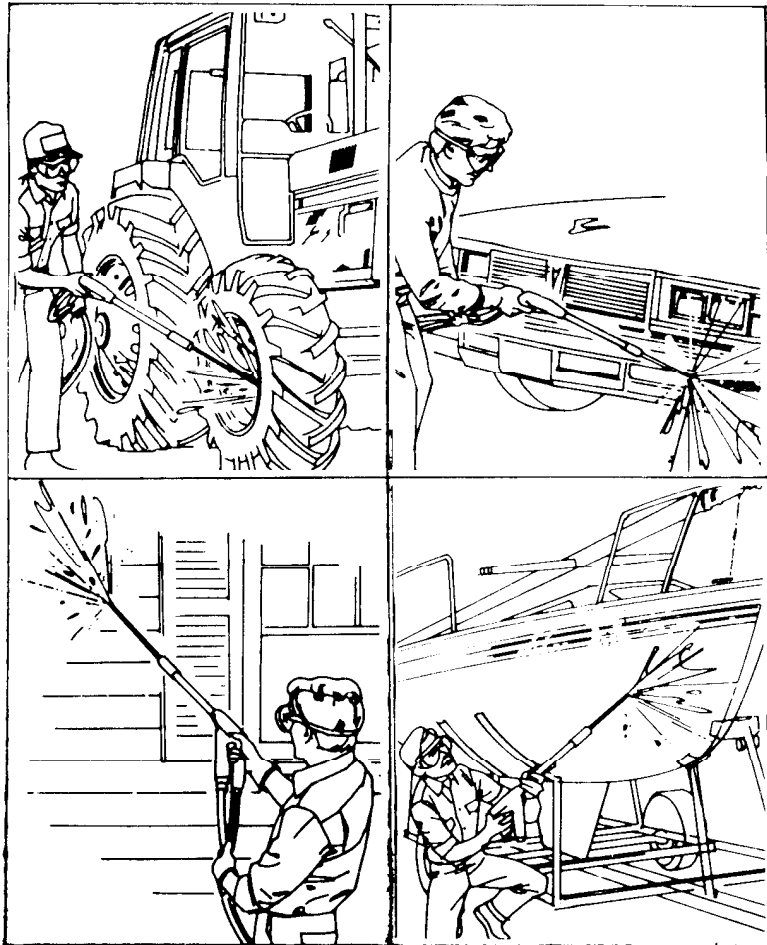
## POWER WASHER

POWERFUL AIR PRESSURE COMBINES WITH WATER AND DETERGENT TO SAFELY SPRAY AWAY DIRT, GREASE AND GRIME

# OPERATOR'S MANUAL



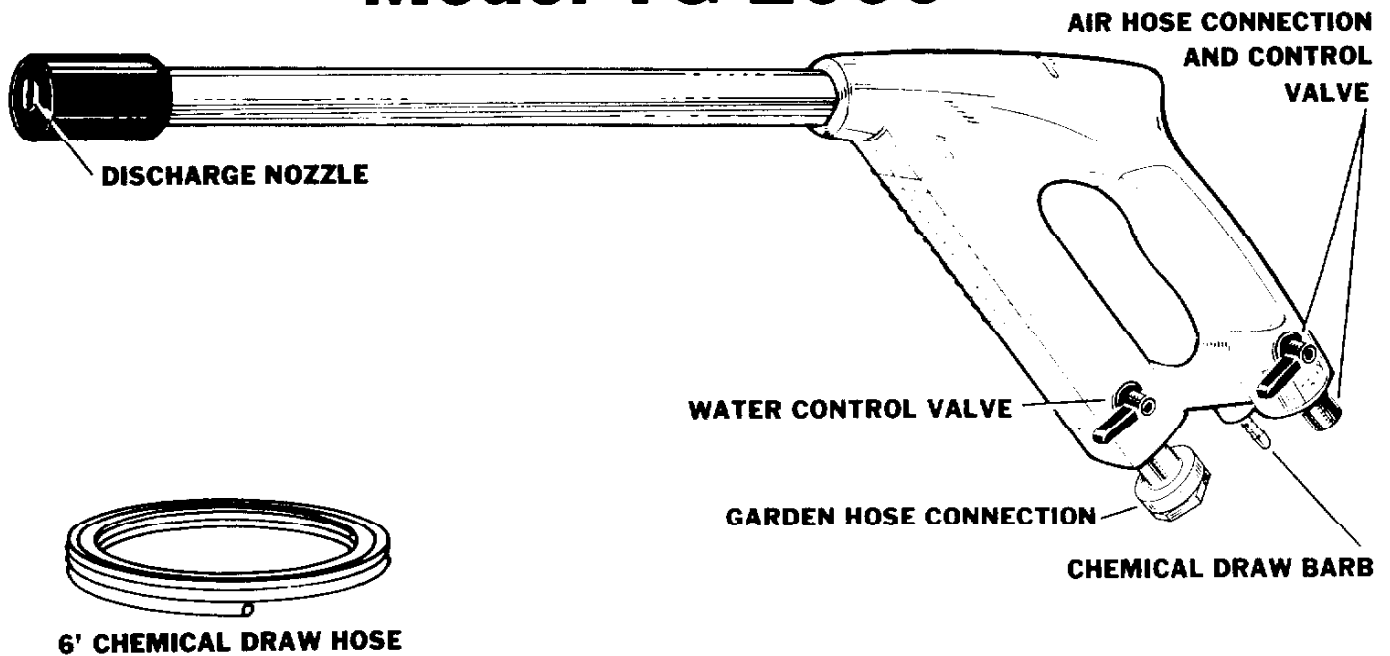
**FARM • HOME • AUTO**



**MODEL TG-2000**

# THUNDER GUN POWER WASHER

## Model TG-2000



### RULES FOR SAFE OPERATION

As with any tool, safety should always be practiced. Since this tool operates with an Air Compressor, always be sure electric cords, air fittings and hoses are in good safe working condition. Read the following safety rules. When practiced you will assure yourself of maximum performance and safe operation.

- Check for and remove any debris in nozzle before operating.
- Do not operate with over 140F (60 C) water temperature.
- Safety goggles or eye protection should be worn.
- Always keep children and pets at a safe distance.
- Never clean a hot engine. Cover battery and carburetor throat.
- Keep washer and hoses away from flames and sharp edges.
- Never take a chance with toxic or poison chemicals. Read and follow instructions and cautions on chemical containers carefully.
- Disconnect all hoses before storing your power washer.

### PREPARATION FOR USE

1. Turn all valves to the OFF position before connecting air, water and chemical draw hoses.
2. For easiest operation attach air hose to male threaded hose connector provided with your Power Washer.

3. Connect water and air hoses to your Power Washer.
4. Check the amount of air pressure you have from the Air Compressor. It should be approximately 90 PSI.

### OPERATING INSTRUCTIONS

The water faucet to which you connect the water hose should always be turned full ON. Control water usage with the water control valve.

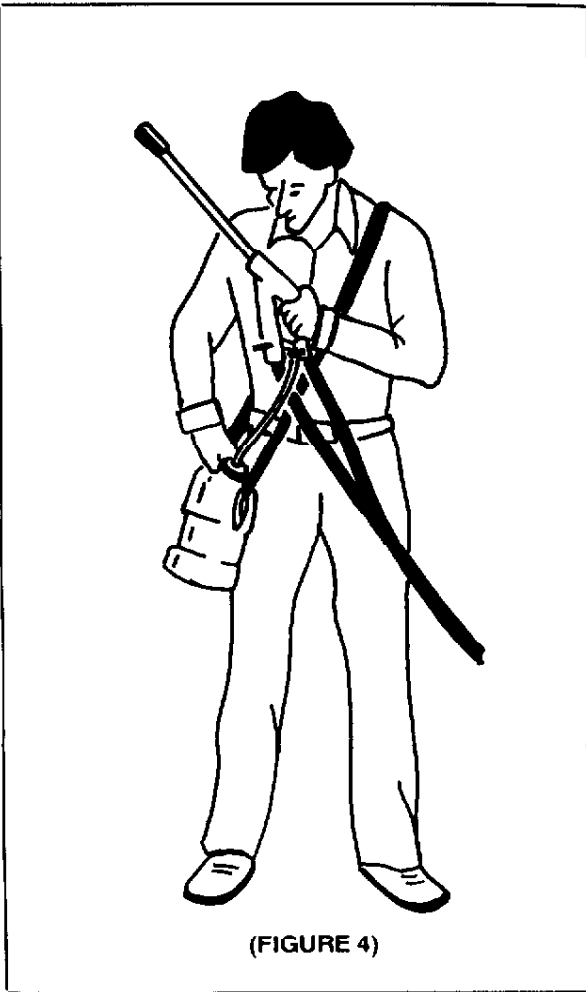
#### TO BLAST WITH COLD OR HOT WATER:

1. Turn water valve full ON.
2. Turn air valve full ON.

#### TO APPLY DETERGENTS AND OTHER CHEMICALS:

1. Connect draw hose to draw barb at bottom of unit.
2. Place weighted end of draw hose in your pre-mixed chemical solution. (A 1-gallon plastic milk jug makes an excellent reservoir.) Make sure weighted end of draw hose is well immersed in reservoir.
3. Turn water valve to OFF position.
4. Turn air valve to full ON position.
5. For your convenience you may want to make a chemical container that straps around your

shoulder. You can do this with items found around the house. Find a clean ½ gallon jug which has a handle and a belt to be used as a strap. Cut or drill a hole large enough in the cap to fit the weighted end of the draw hose. (Figure 4)

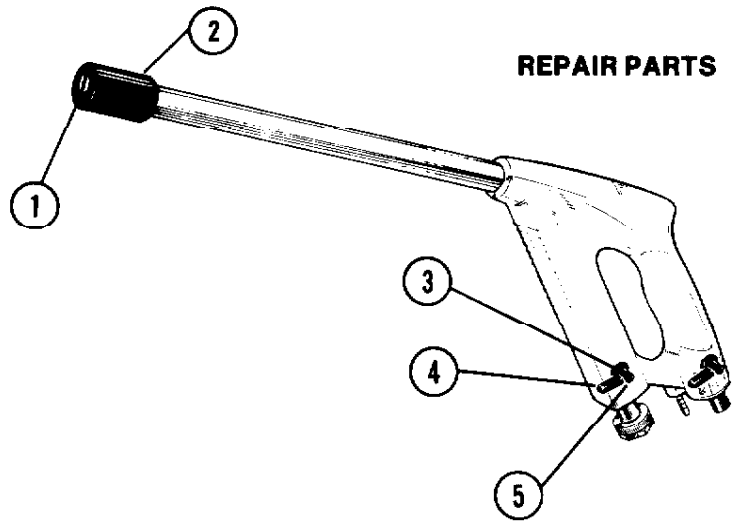


(FIGURE 4)

## CARE AND CLEANING

1. After you have used your Power Washer, disconnect all hoses. With all valves in the ON position hold the unit with nozzle pointed up until any remaining liquid drains out.
2. To clean the draw hose, place one end in front of the nozzle and turn water valve slightly ON. This should rinse the inner side of the draw hose from solution and prolong its life. Rinse chemical containers well and store in safe place.
3. To clean exterior, wipe with a damp cloth.
4. Your Power Washer is now ready for its next use.
5. If service does seem necessary refer to back cover.

To protect your Power Washer from damage, avoid contact with solvents, thinners, battery acids and high alcohols.



## REPAIR PARTS

Key No.	Part No.	Description
1	1402-011	Nozzle
2	1905-002	Guard
+3	1501-007	"O" Ring
+4	0803-010	Handle
+5	1901-021	Screw
6	0802-012	6' Draw Hose
7	0902-015	Owners Manual

+ Can be used for either water or air valves.

## SPECIFICATIONS

**POWER REQUIREMENTS:** 1 H.P. air compressor or larger and water source

**AIR SUPPLY TO UNIT:** 80 PSI minimum (550 kPa) 175 PSI maximum (1,206 kPa)

**WATER SUPPLY TO UNIT:** 45 PSI (310 kPa) minimum 150 PSI (1,035 kPa) max.

**DISCHARGE VELOCITY:** Approx. 365 MPH (580 KPH)

**MAXIMUM WATER TEMPERATURE:** 140° F (60° C)

**CHEMICAL DRAW SYSTEM:** Vacuum type

**NOZZLE:** Specially machined brass (Fan spray)

**MOVABLE PARTS:** 2 (Air & Water Valves)

**GALLONS PER MINUTE:** 3.4 (12.5 litres)

**LENGTH:** 26 inches (67.3 centimeters)

**WEIGHT:** 3 lbs. (1.35 kilograms)

## ATTENTION

TO INSURE THE PROPER OPERATION OF THE AIR AND WATER VALVES A FEW DROPS OF OIL SHOULD BE PLACED INTO EACH VALVE AT LEAST ONCE EACH MONTH AND BEFORE LONG PERIODS OF STORAGE. THIS WILL INSURE FREE MOVEMENT OF THE VALVES AT ALL TIMES. THE VALVES SHOULD BE ROTATED SEVERAL TIMES AFTER THE OIL IS PLACED IN THE VALVE TO INSURE SMOOTH OPERATION.

## **THUNDER GUN POWER WASHER LIMITED ONE-YEAR WARRANTY**

### **THIS WARRANTY BECOMES EFFECTIVE ON DATE OF PURCHASE**

Each new power washer is warranted against manufacturing defects in material or workmanship under normal use and service. Our obligation under this warranty shall be limited to repair or replacement, to the original purchaser of any parts which, within a period of one year from date of purchase by the original owner, shall be shown to our satisfaction upon examination to have manufacturing defects in materials or workmanship. This warranty includes labor to replace the defective part(s).

This warranty does not apply to periodic mechanical adjustments, to damage in transit or damage caused by misuse, negligence or accident or to alternations or repairs performed by anyone other than Factory Service Center. Use of chemicals other than those recommended by us may void your warranty.

This warranty is nul and void if any parts other than original manufacturers parts are used or, if in the opinion of the manufacturer, a power washer has been serviced, modified or repaired in such a manner as to adversely affect its reliability or performance.

### **THERE IS NO OTHER EXPRESS WARRANTY**

IMPLIED WARRANTY, INCLUDING THOSE OF MERCHANTABILITY AND FITNESS FOR A PARTICULAR PURPOSE ARE LIMITED TO ONE YEAR FROM DATE OF PURCHASE AND TO THE EXTENT PERMITTED BY LAW ANY AND ALL IMPLIED WARRANTIES ARE EXCLUDED. THIS IS THE EXCLUSIVE REMEDY AND LIABILITY FOR CONSEQUENTIAL DAMAGES UNDER ANY AND ALL WARRANTIES ARE EXCLUDED TO THE EXTENT EXCLUSION IS PERMITTED BY LAW.

We reserve the right to make changes in designs and changes or improvements on our product without imposing any obligation upon ourselves to install the same changes or improvements on products heretofore manufactured.

This warranty gives you specific legal rights, and you may also have other rights which vary from state to state.

Made in U. S. A.

92-0902-015

**PARKER McCRORY MFG. CO.**

2000 Forest Ave.  
Kansas City, MO 64108